

**FIRST AMENDMENT TO JOINT PLANNING AREA AGREEMENT BETWEEN
LAKE COUNTY AND THE CITY OF MOUNT DORA**

THIS FIRST AMENDMENT TO THE JOINT PLANNING AREA AGREEMENT (“Amendment”) in made and entered into as of the 3rd day of March, 2015, by and between **LAKE COUNTY, FLORIDA**, a political subdivision of the State of Florida (“County”) and the **CITY OF MOUNT DORA**, a Florida municipal corporation (“City”).

RECITALS

WHEREAS, County and City have entered into a certain Joint Planning Agreement on September 28, 2004 (“Agreement”); and

WHEREAS, the City wishes to provide for better intergovernmental relations and coordinate planning efforts, as authorized pursuant to Section 163.01, Florida Statutes; and

WHEREAS, the County and City Joint Planning Agreement may be amended from time to time provided authorization by both parties; and

WHEREAS, the City Council of the City of Mount Dora and the Board of County Commissioners of Lake County wish to eliminate any conflict in jurisdictional boundaries for annexation and utility provision between the City of Mount Dora and City of Tavares; and

WHEREAS, the City requested that the County amend the Agreement’s Land Use Map; and

WHEREAS, the local planning agencies of both the County and City have considered the Amendment and made recommendations to the Lake County Board of County Commissioners and the Mount Dora City Council, respectively; and

WHEREAS, pursuant to 163.3171(3), Florida Statutes, this Amendment has been approved at advertised public hearings held by both the Lake County Board of County Commissioners and the Mount Dora City Council.

NOW, THEREFORE, in Consideration of the covenants made by each party to the other and of the mutual advantages to be realized by the parties hereto, the receipt and sufficiency of which is hereby acknowledged, County and City hereby agree as follows.

SECTION I. The Recitals set forth above are true and correct and are incorporated herein by reference.

SECTION II. The Joint Planning Agreement dated September 28, 2004, is hereby amended to reflect an adjustment in the Joint Planning Area boundary in the vicinity of the intersection of Bay Road and Old Highway 441. The boundary of the JPA Map attached hereto and incorporated herein by reference as Exhibit "A," which designates parcels of land encompassed by the terms and conditions of said Agreement.

SECTION III. The City and County shall amend their respective Comprehensive Plans pursuant to the revised JPA Map boundary of this Amendment accordingly and in a timely manner.

SECTION IV. Except as expressly set forth herein, the Joint Planning Agreement remains unchanged and in full force and effect.


IN WITNESS WHEREOF, the County and City have executed this Amendment on behalf of the County and City, respectively, and have set their seals hereto as of the date set forth above.

COUNTY
ATTEST:

LAKE COUNTY, though its
BOARD OF COUNTY COMMISSIONERS

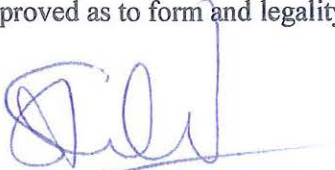


Clerk of the Board of
County Commissioners of
Lake County, Florida



Jimmy Conner, Chairman
This 10th Day of May, 2015


Approved as to form and legality:



Sanford A. Minkoff
County Attorney

CITY
ATTEST:

CITY OF MOUNT DORA




Gwen Johns, City Clerk
City of Mount Dora



Catherine T. Hoechst, Mayor
City of Mount Dora

This 5 Day of May, 2015

Approved as to form and legality:



Clifford B. Shepard
City Attorney



Exhibit "A"

Lake County and City of Mount Dora Joint Planning Area Map

** Revised JPA Boundary **

March 3, 2015

Legend

-  JPA Boundary
-  City Limits

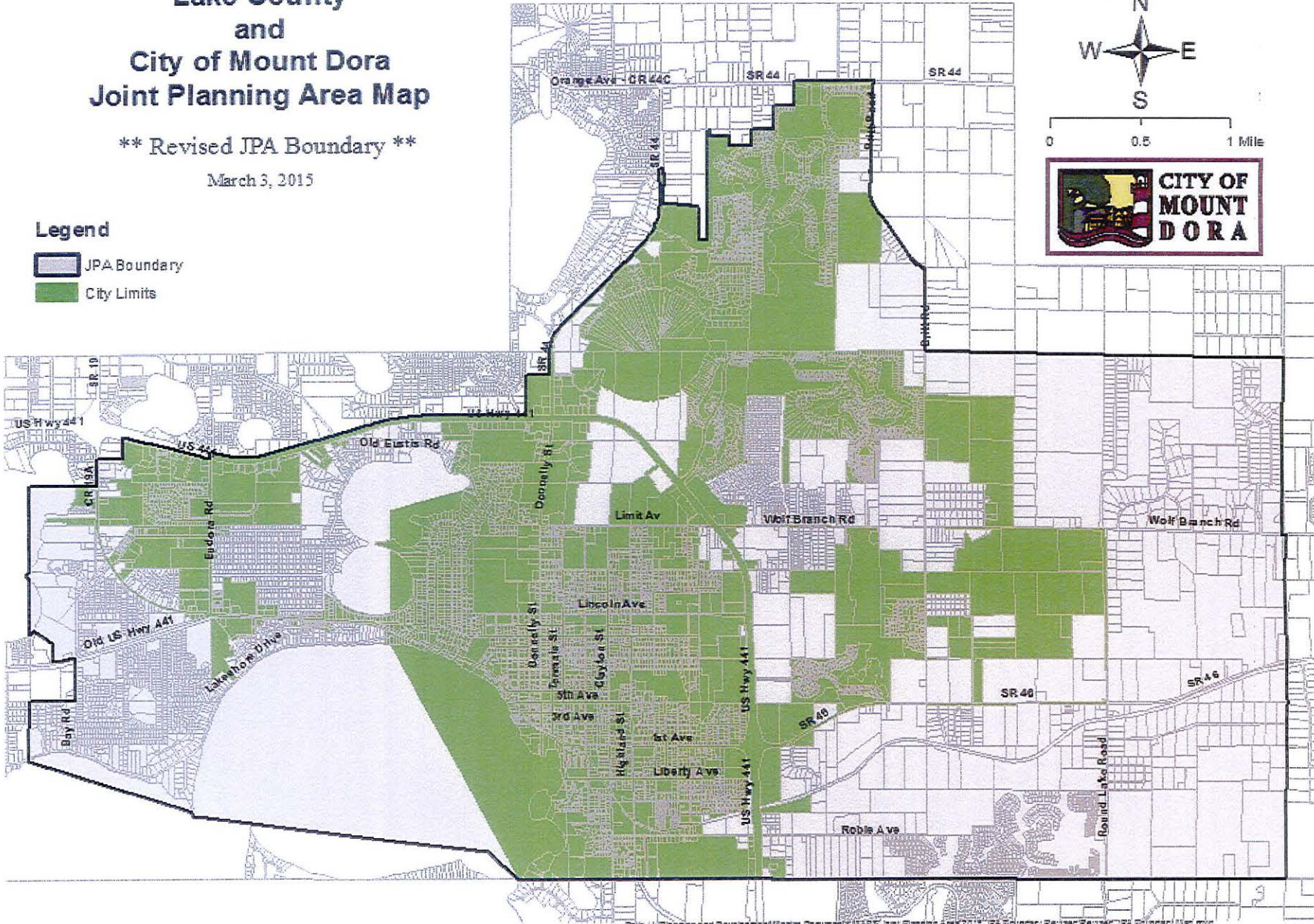
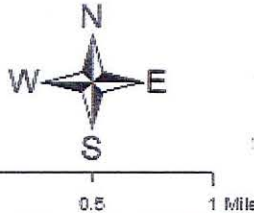


Fig. 1. Planning and Development Master Document (MAPS) - Joint Planning Area 2015 JPA Boundary, Revised Revised JPA Boundary Map.mxd